

CONTINUING MEDICAL EDUCATION ΣΥΝΕΧΙΖΟΜΕΝΗ ΙΑΤΡΙΚΗ ΕΚΠΑΙΔΕΥΣΗ

Hematology-Cell Morphology – Case 15

At times of this type of the disease some large immature cells are present with multiple and numerous nuclei, abnormality of immature chromatin appearance, with large and well visible nucleoli, polyploidy, caryorhexis and cytoplasmic abnormalities and with a very malignant appearance and blizzard shape, maturation asynchrony assuming the appearance of an anaplastic type of the disease (particular value when the percentage of this cell is low in the bone marrow).

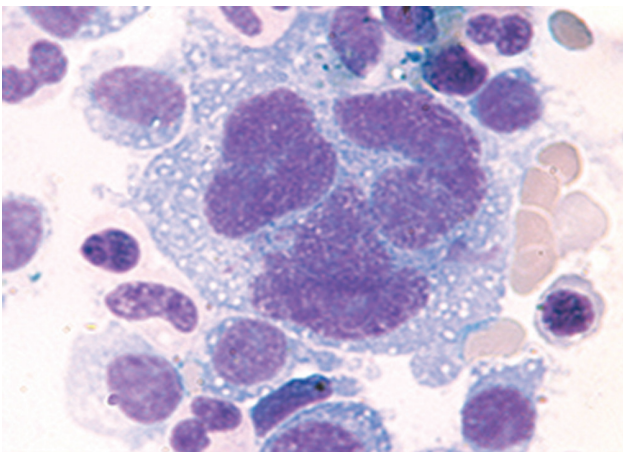


Figure 1

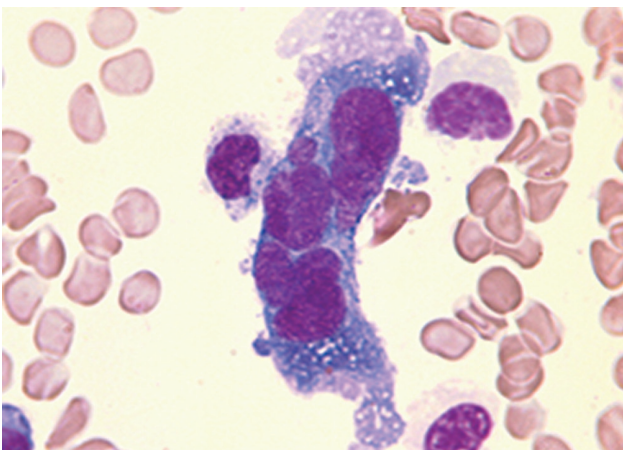


Figure 2

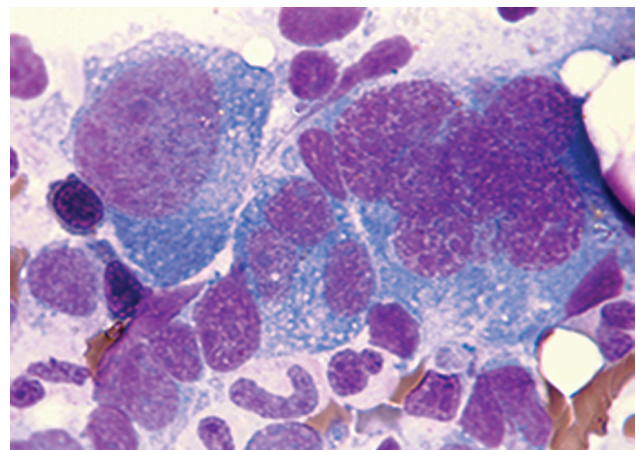


Figure 3

ARCHIVES OF HELLENIC MEDICINE 2022, 39(2):285–288
ΑΡΧΕΙΑ ΕΛΛΗΝΙΚΗΣ ΙΑΤΡΙΚΗΣ 2022, 39(2):285–288

J.V. Asimakopoulos,
L. Papageorgiou,
I. Vasilopoulos,
E. Konstantinou,
D. Galopoulos,
M.P. Arapaki,
C. Chatzidimitriou,
M. Belia,
A. Machairas,
J. Drandakis,
A. Kopsaftopoulou,
A. Piperidou,
A. Georgopoulou,
A. Karapaschalidis,
A. Alexandropoulos,
M.A. Lefaki,
P. Petsa,
F. Panitsas,
K. Benekou,
E. Sinni,
E. Plata,
M.P. Siakantaris,
P. Tsafaridis,
T. Vassilakopoulos,
M.K. Angelopoulou,
K. Konstantopoulos,
J. Meletis

Hematology Department and Bone Marrow Transplantation Unit, National and Kapodistrian University of Athens, School of Medicine, "Laikon" General Hospital, Athens, Greece

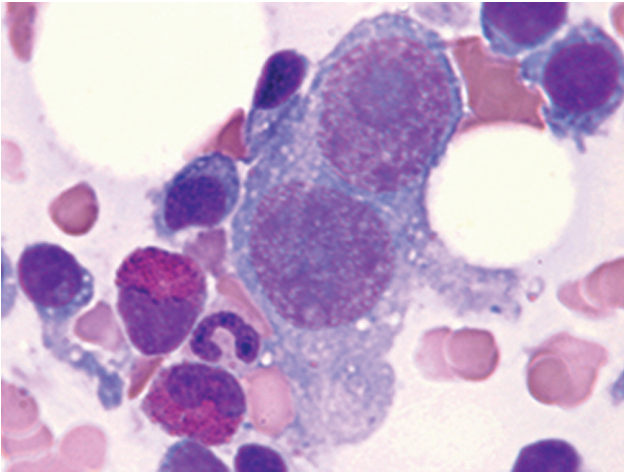


Figure 4

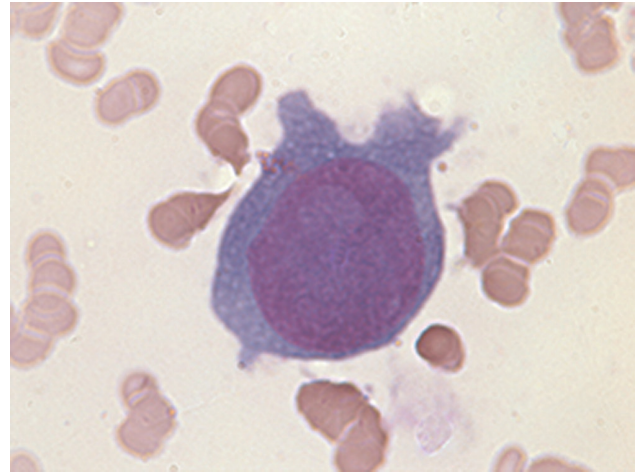


Figure 8

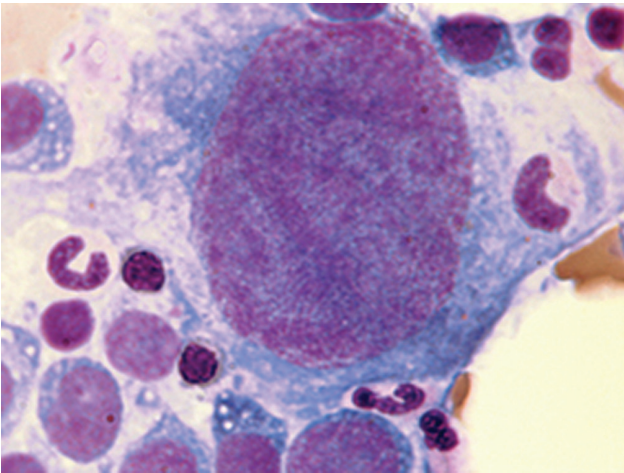


Figure 5

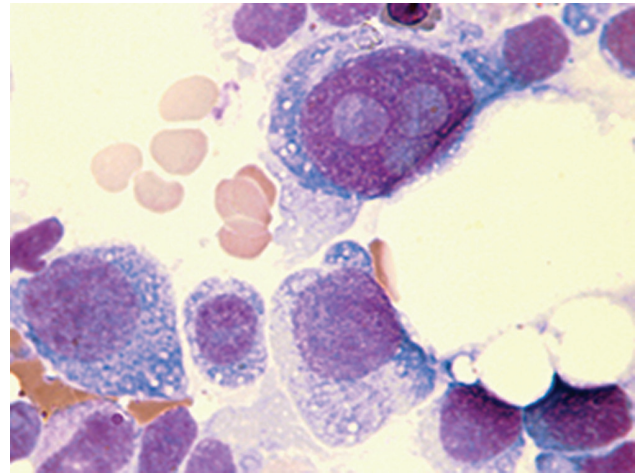


Figure 7

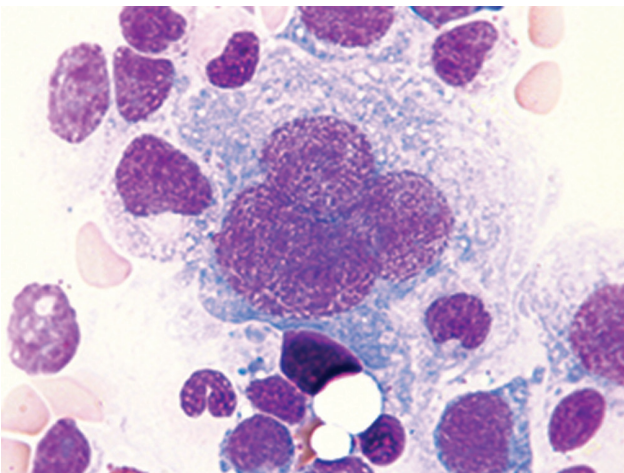


Figure 6

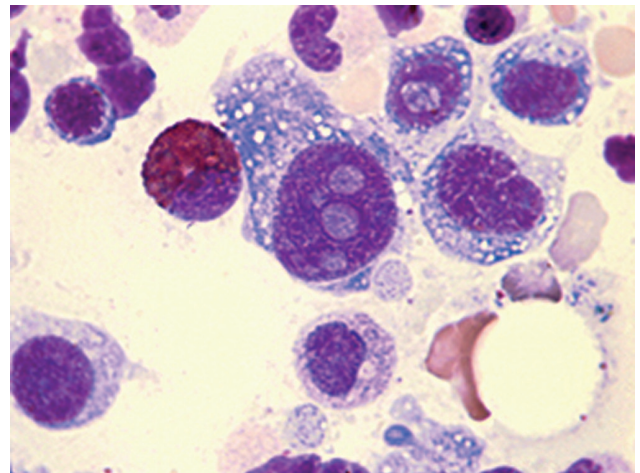


Figure 9

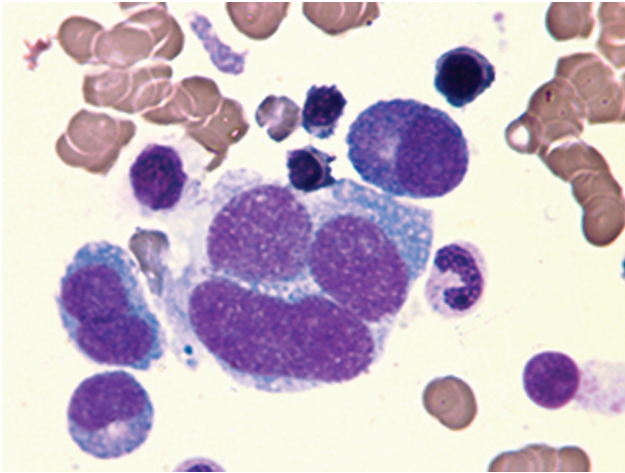


Figure 10

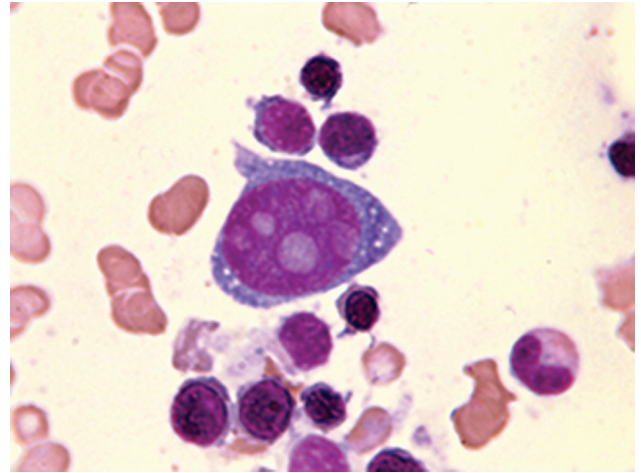


Figure 13

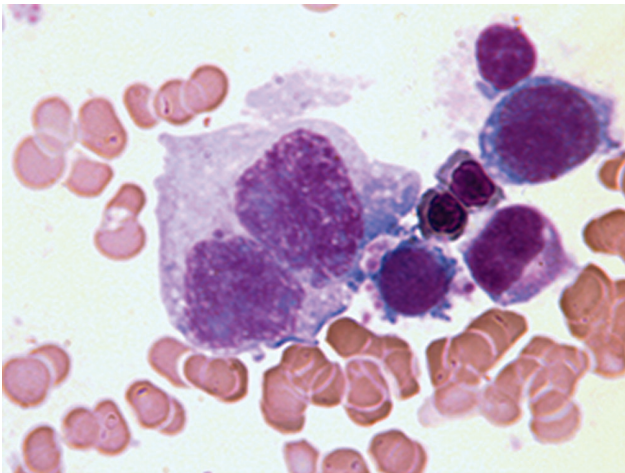


Figure 11

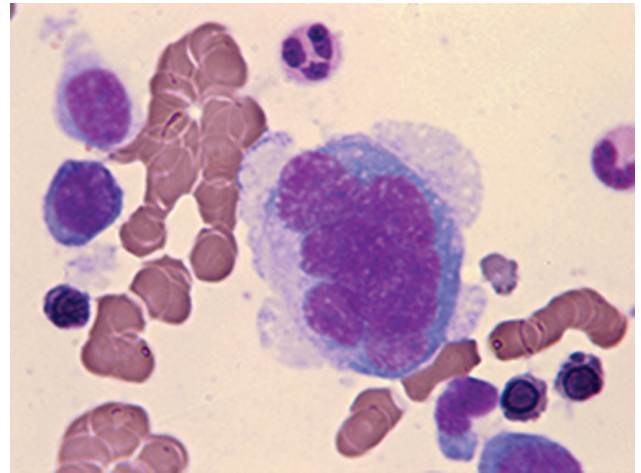


Figure 14

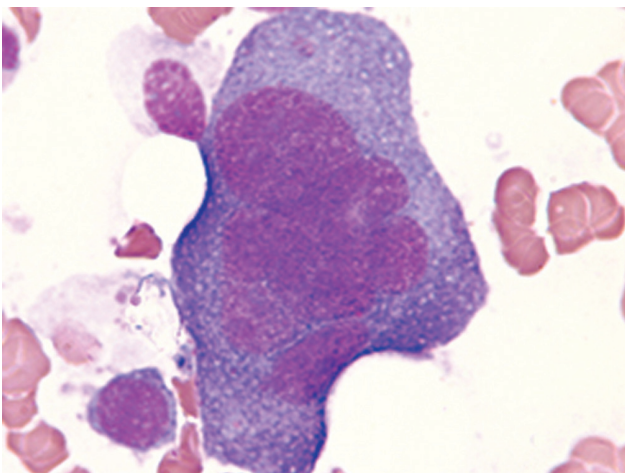


Figure 12

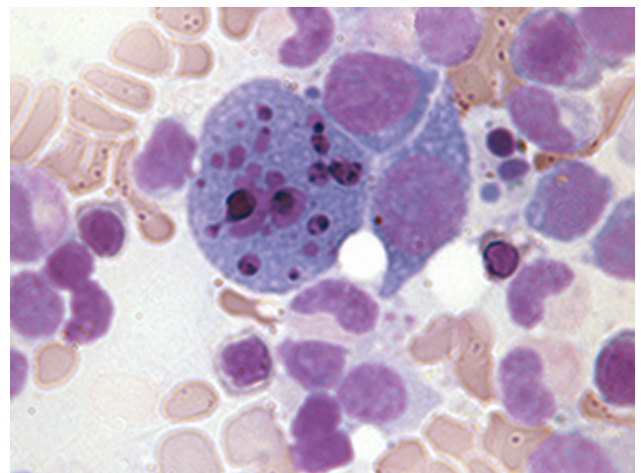


Figure 15

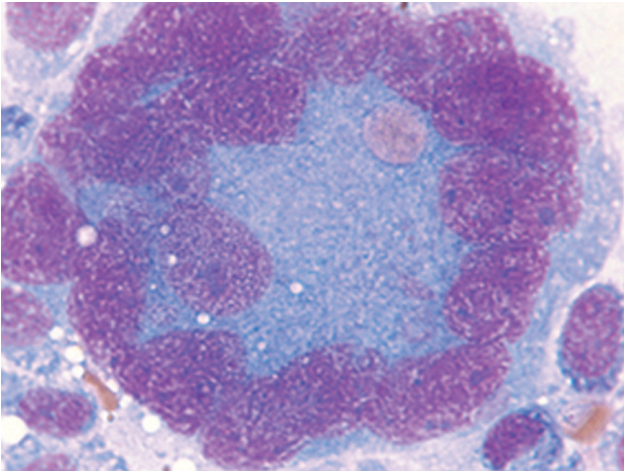


Figure 16

References

1. MELETIS J. *Atlas of hematology*. 3rd ed. Nireas Publ Inc, Athens, 2009:513–534

Corresponding author:

J. Meletis, Hematology Department and Bone Marrow Transplantation Unit, National and Kapodistrian University of Athens, School of Medicine, "Laikon" General Hospital, Athens, Greece

e-mail: imeletis@med.uoa.gr