

CONTINUING MEDICAL EDUCATION ΣΥΝΕΧΙΖΟΜΕΝΗ ΙΑΤΡΙΚΗ ΕΚΠΑΙΔΕΥΣΗ

Hematology-Cell Morphology – Case 3

(A)

A cell with a plasmacytoid appearance, but of larger size (about 2–3 times the normal plasmacytic size); it usually has an ellipsoid appearance, eccentric (like extracted) nucleus, 1–2 well visible nucleoli, light basophilic cytoplasm with a well visible colorless perinuclear halo (figures 1 to 3). They are usually present in small size aggregations (frequent in children but in rare numbers in the adult).

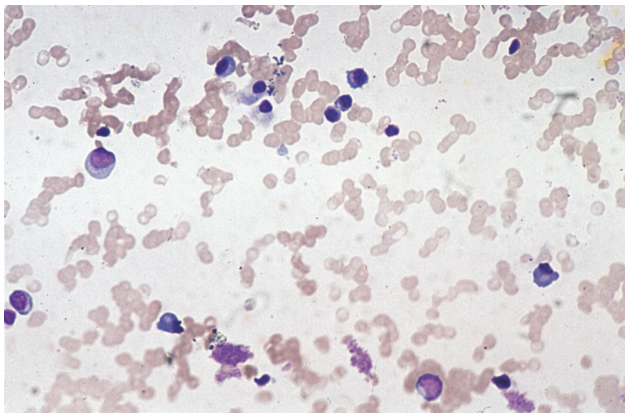


Figure 1

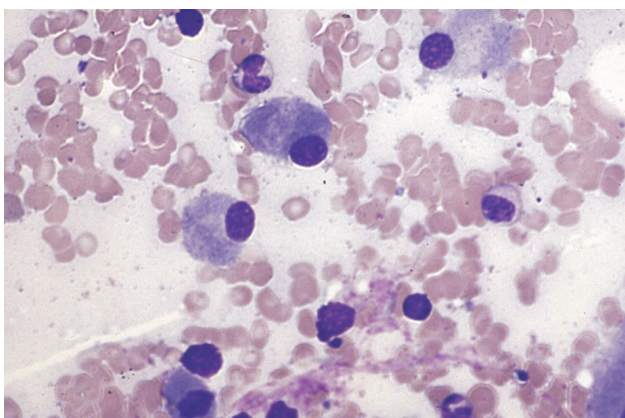


Figure 2

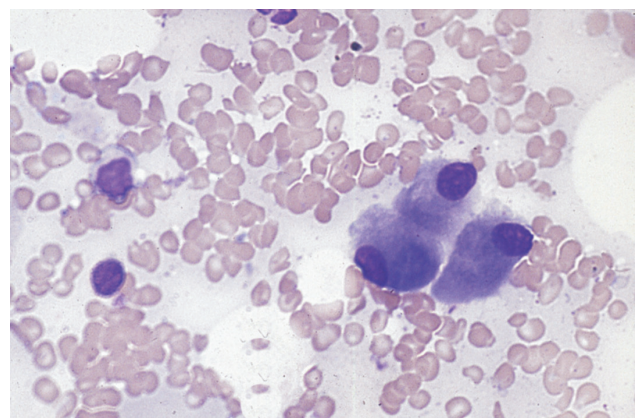


Figure 3

ARCHIVES OF HELLENIC MEDICINE 2020, 37(2):281–283
ΑΡΧΕΙΑ ΕΛΛΗΝΙΚΗΣ ΙΑΤΡΙΚΗΣ 2020, 37(2):281–283

**J.V. Asimakopoulos,
L. Papageorgiou,
P.M. Arapaki,
C. Chatzidimitriou,
M. Belia,
E.F. Triantafyllou,
E. Konstantinou,
M. Efstathopoulou,
D. Galopoulos,
E. Pliakou,
J. Drandakis,
A. Machairas,
A. Kopsaftopoulou,
K. Benekou,
F. Panitsas,
E. Sinni,
M.P. Siakantaris,
P. Tsaftaridis,
E. Plata,
T.P. Vassilakopoulos,
M.K. Angelopoulou,
K. Konstantopoulos,
J. Meletis**

Hematology Department and Bone Marrow Transplantation Unit, National and Kapodistrian University of Athens, School of Medicine, "Laiko" General Hospital, Athens, Greece

(B)

Cell size is about 100 μm , containing 1–6 nuclei, with one or more small well visible nucleoli in each nucleus, abundant reddish-blue cytoplasm with a few reddish granules. Because of

its large cell size and the multiple nuclei it is necessary to make its distinction from a megakaryocyte (osteoclast contains regular round or oval nuclei each containing one or more nucleoli) (figures 4 to 12). This cell has the same progeny cell with the other myeloid series cells.

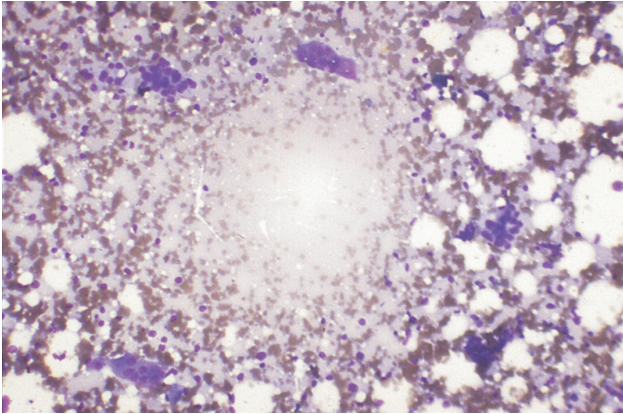


Figure 4

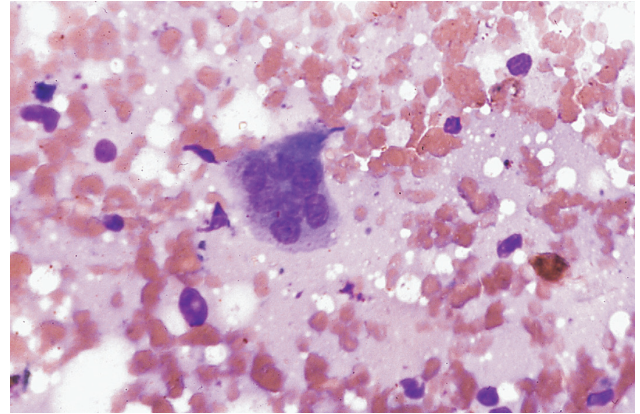


Figure 7

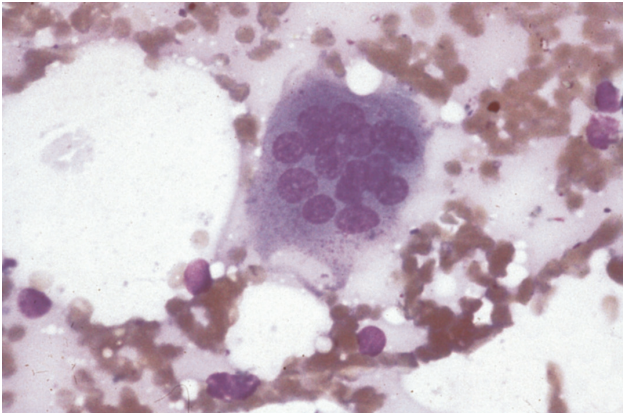


Figure 5

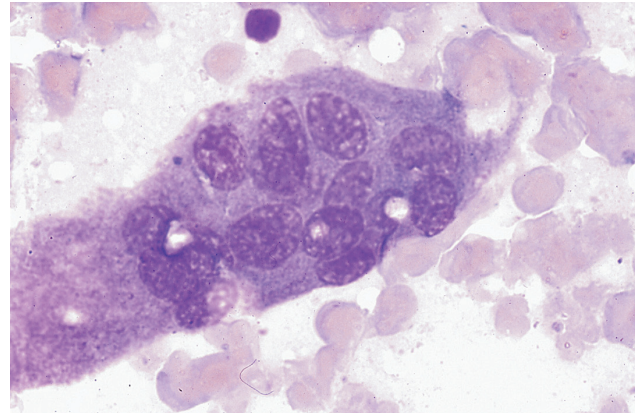


Figure 8

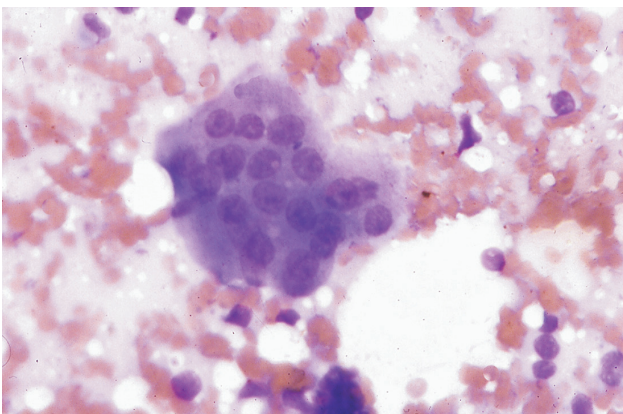


Figure 6

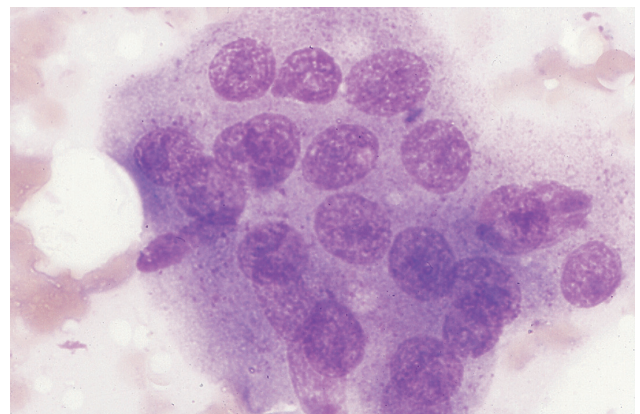


Figure 9

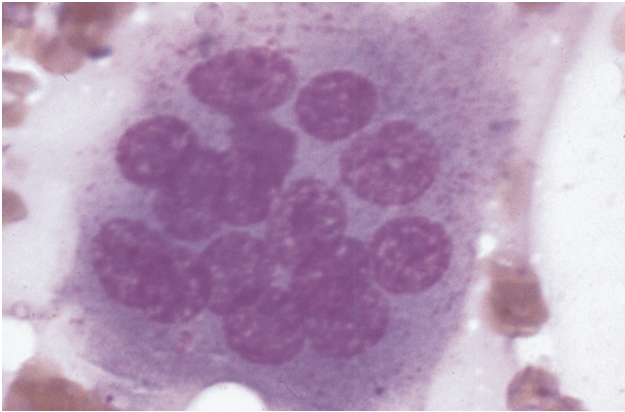


Figure 10

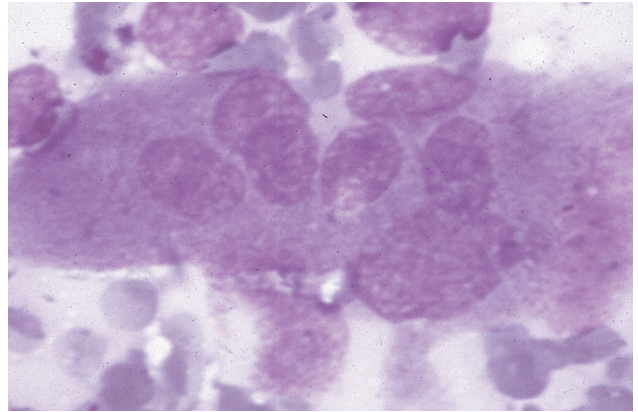


Figure 12

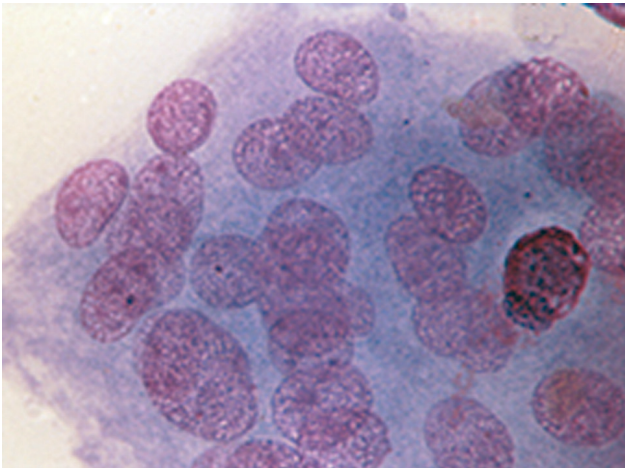


Figure 11

References

1. MELETIS J. *Atlas of hematology*. 3rd ed. Nireas Publ Inc, Athens, 2009:103–108

Corresponding author:

J. Meletis, Hematology Department and Bone Marrow Transplantation Unit, National and Kapodistrian University of Athens, School of Medicine, “Laiko” General Hospital, Athens, Greece
e-mail: imeletis@med.uoa.gr